








# GIVEWAVE

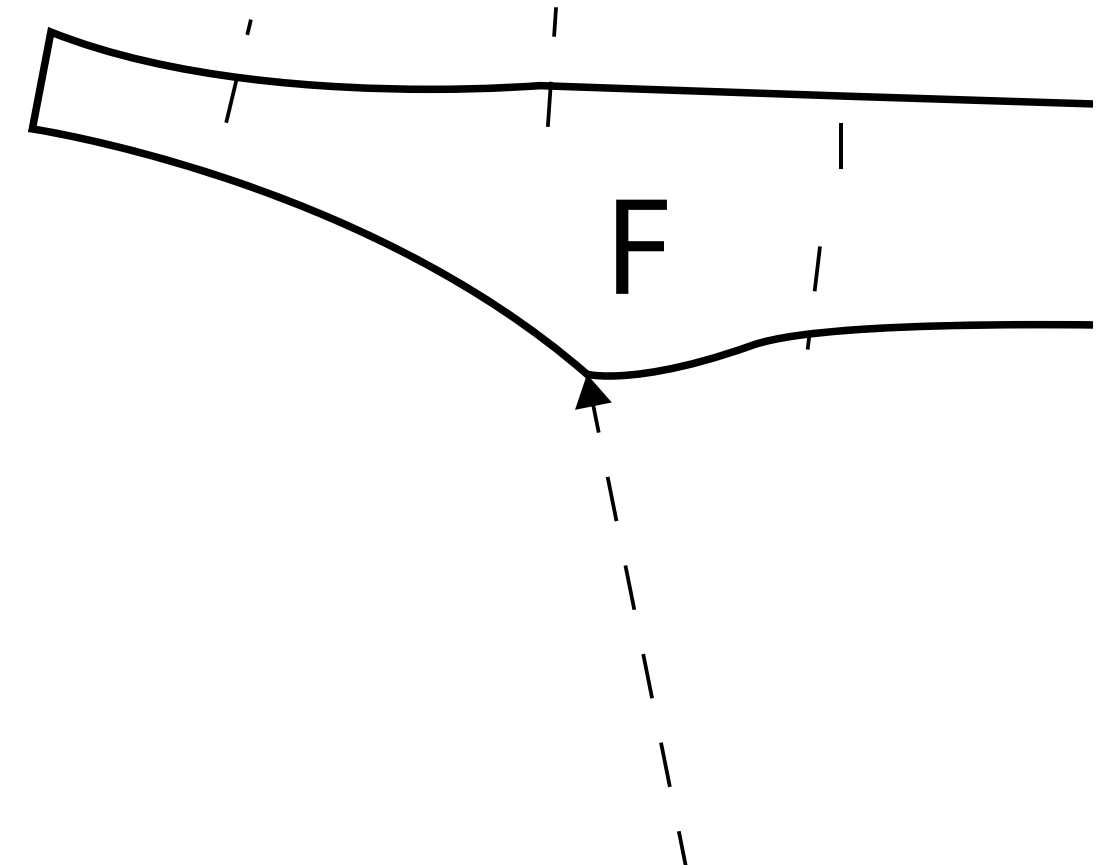
studios

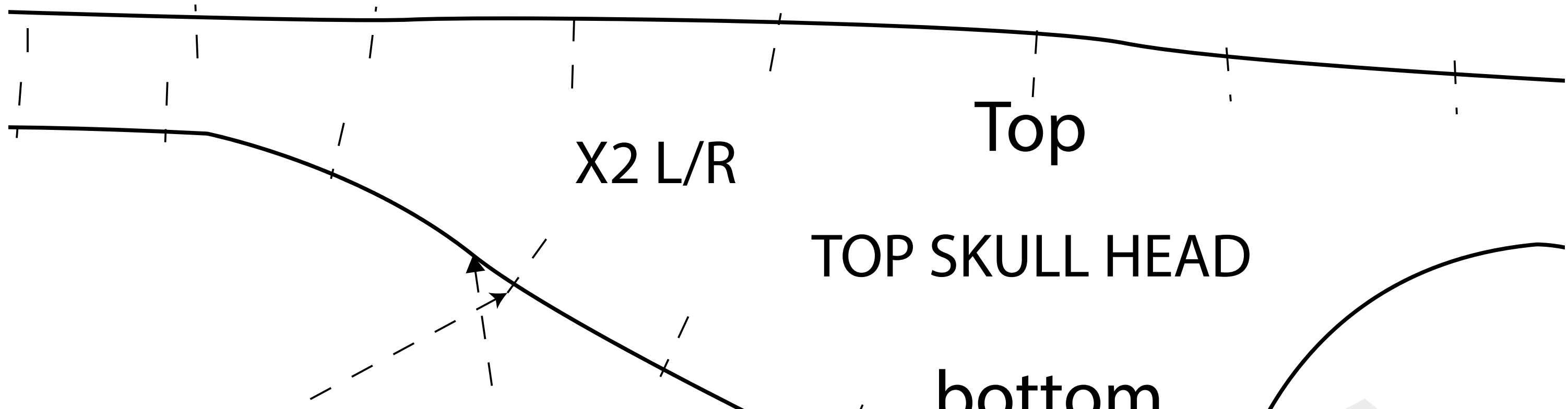
## HORSE SKULL PATTERNS

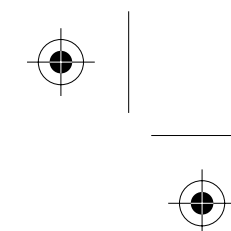
-  2 mm Foam
-  V cuts
-  45° Angle cuts
-  5 mm Foam
-  10 mm Foam

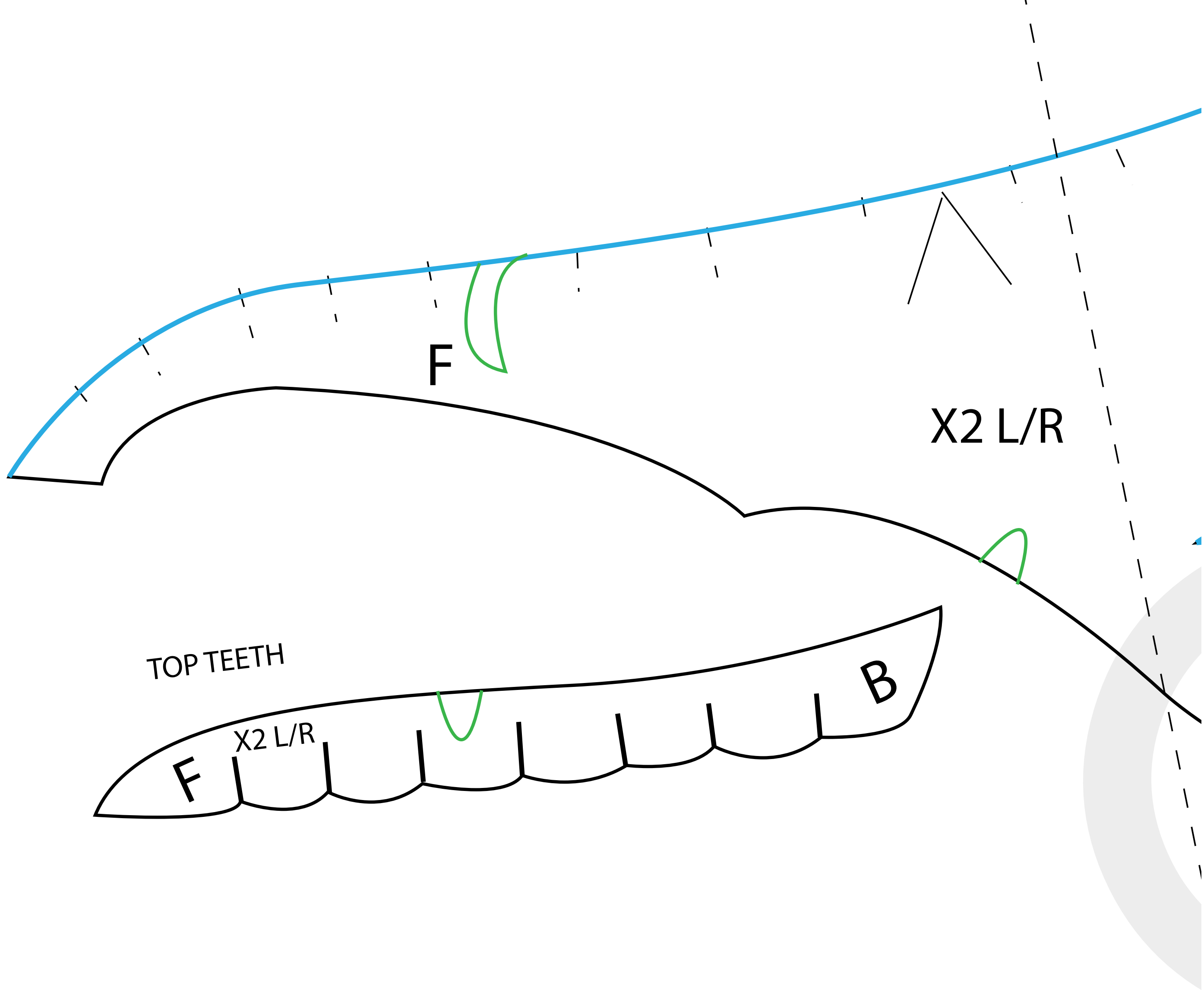
### NOTES:

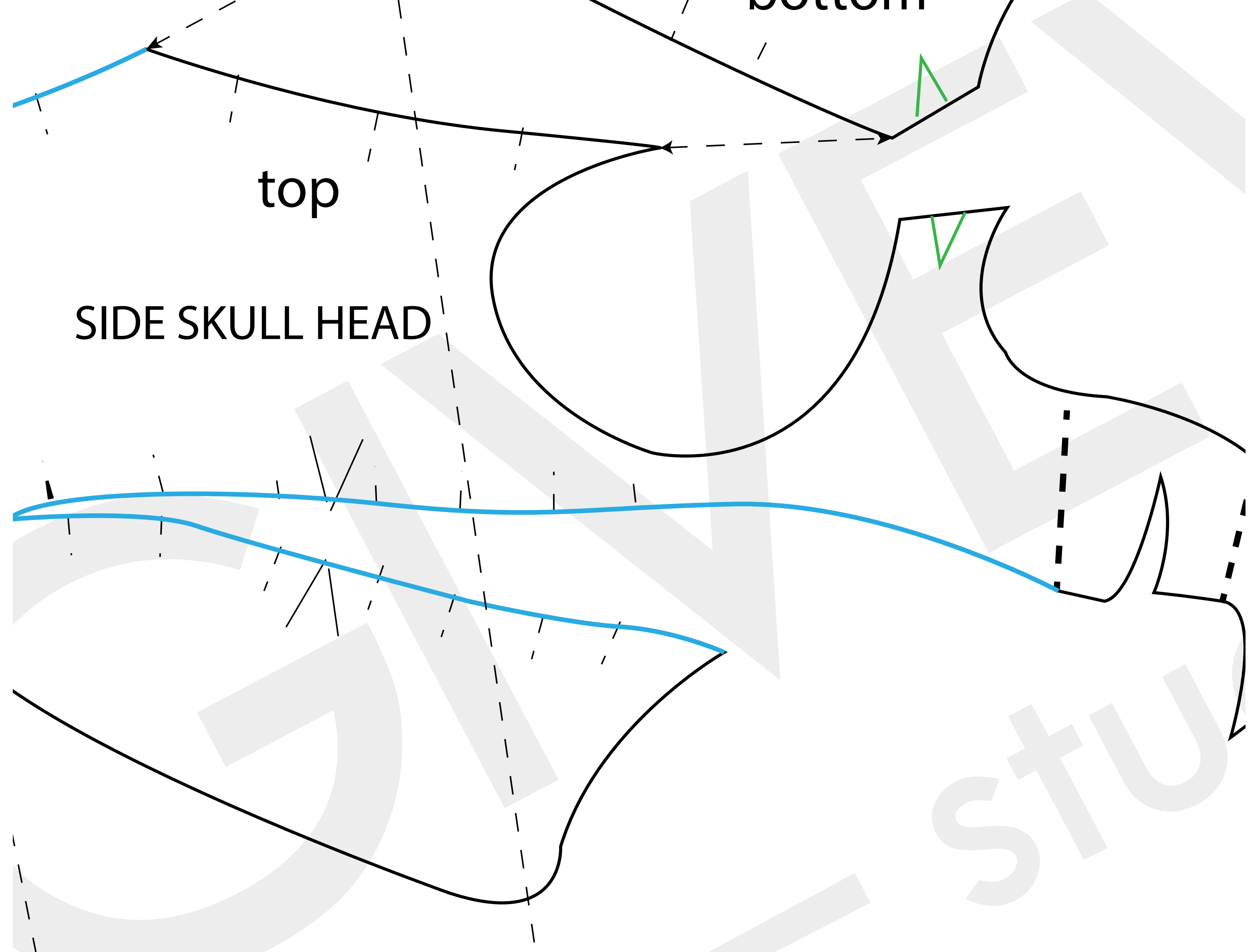
- Be sure to watch the step by step tutorial on the GiveWave Studios Youtube Chanel ( IF THERE IS ONE )
- This Page contains all the main pieces that make up the skull ( front teeth details need to be carved in once assembled ).
- Although this can be assembled with hot glue or other types of adhesives using EVA foam, CONTACT CEMENT is highly recommended for maximum adhesion and durability.

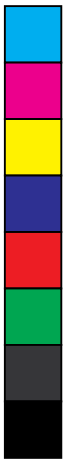
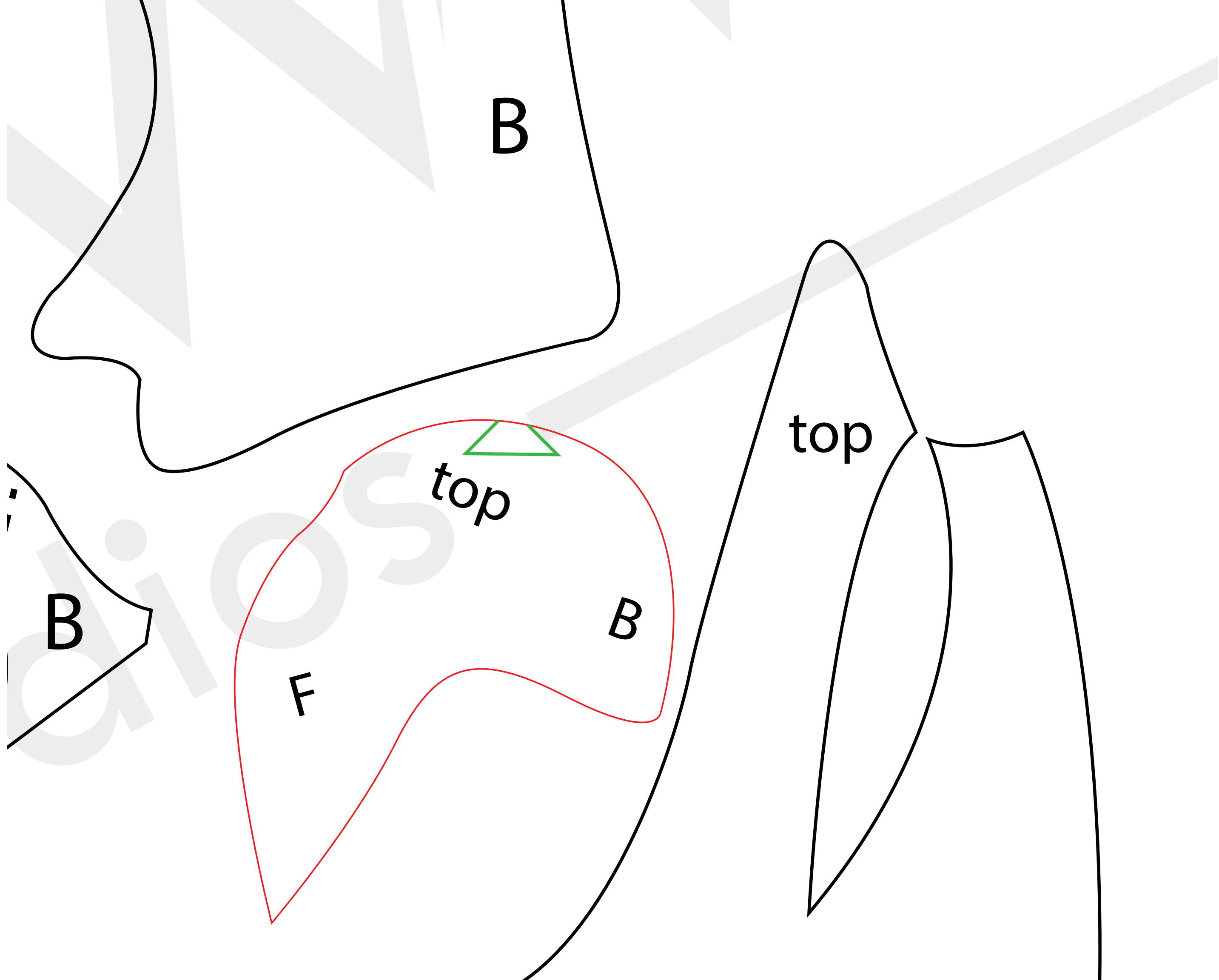


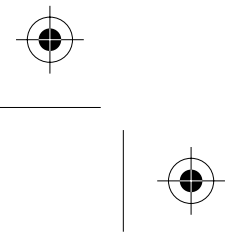
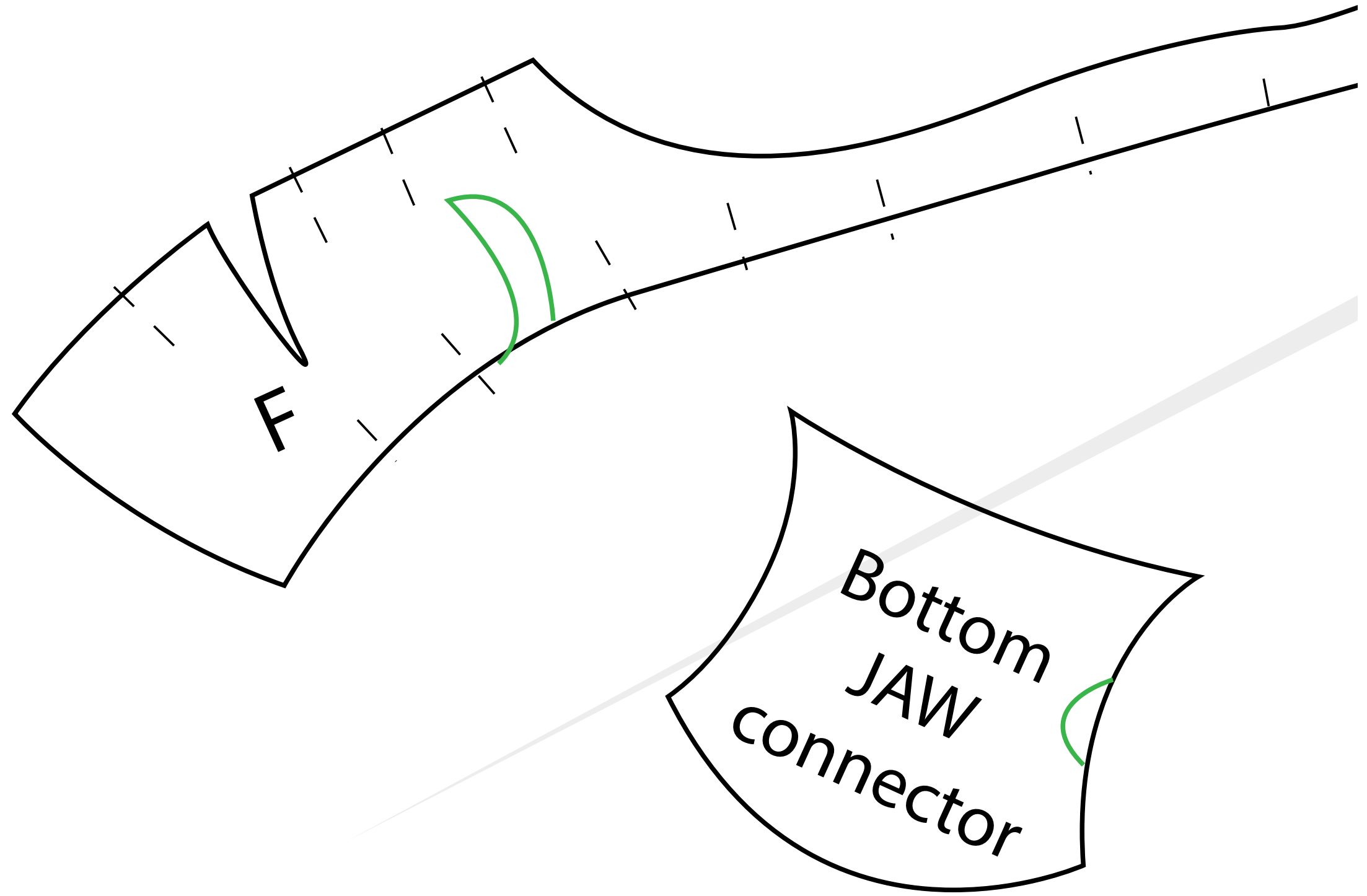


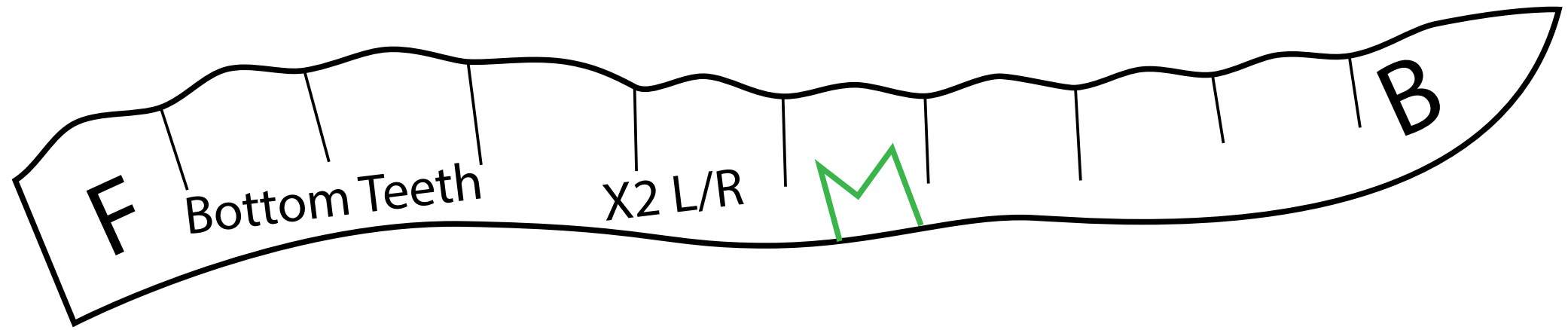
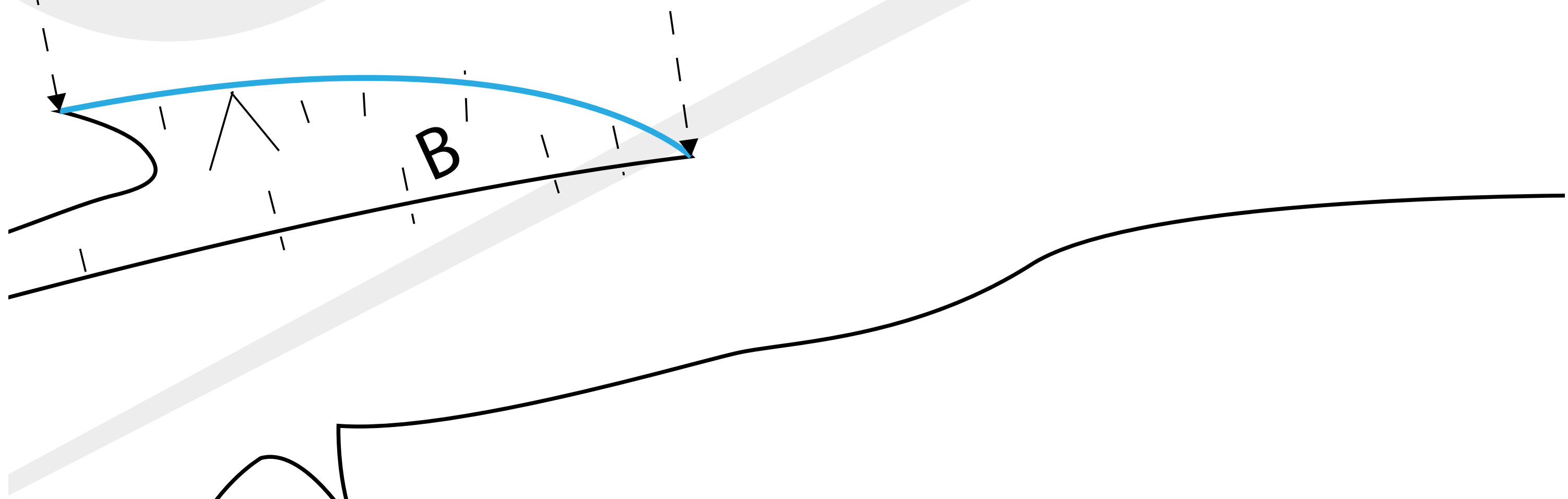




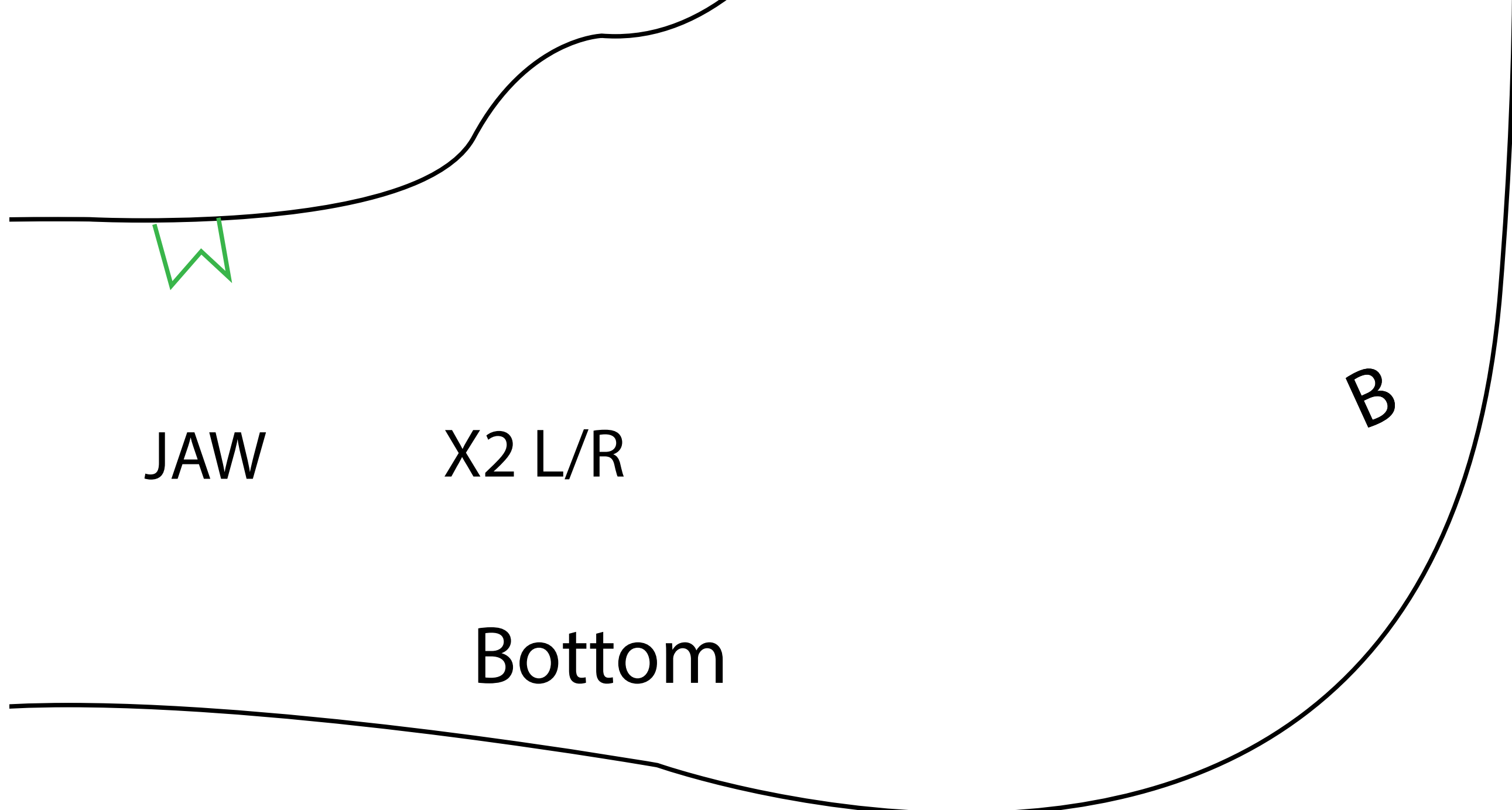












Unauthorized Distribution & Sharing of this file  
is strictly prohibited by Law.  
All Rights Reserved. © 2016 GiveWave Studios LLC.

      / GiveWaveStudios

